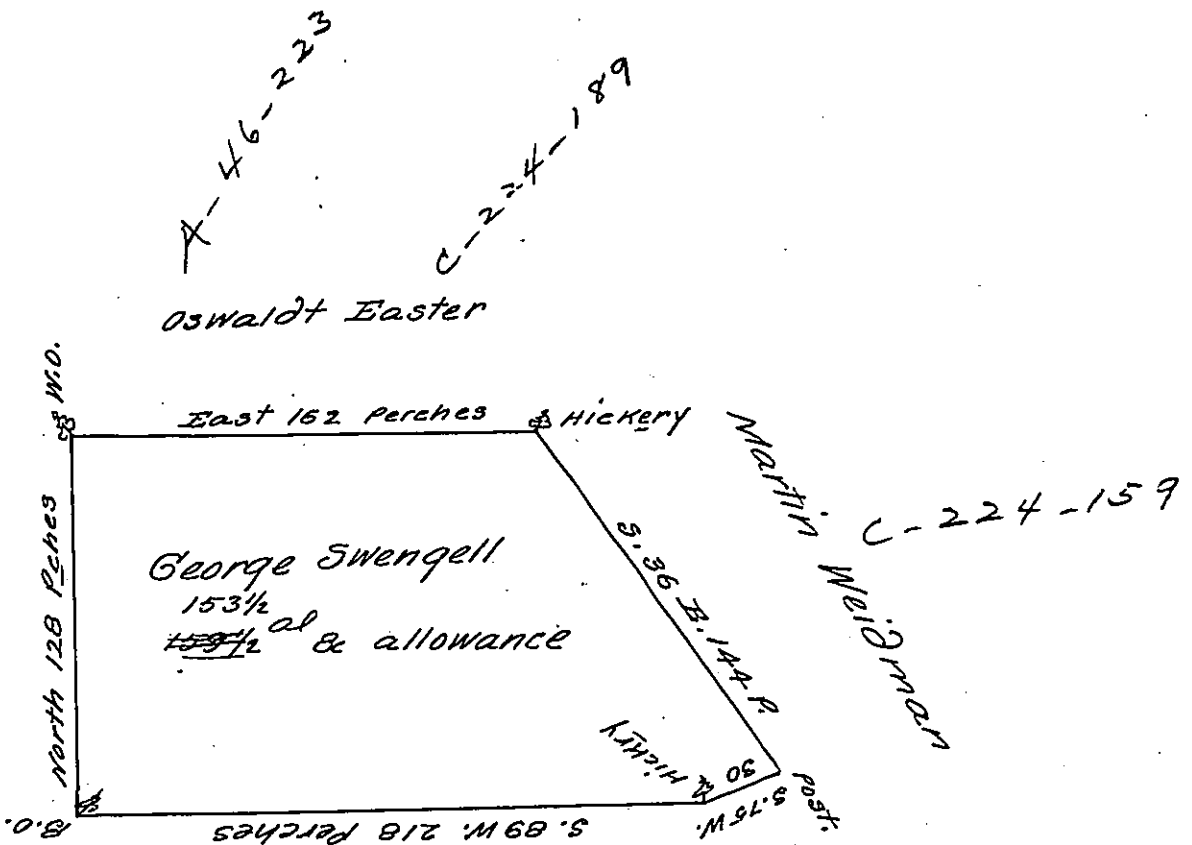


fig.
253

Michael Shank



Oswaldt Easter

George Swengell
153 1/2 ac & allowance

John Jacob Grove

A-11-36

A Draught of a Tract of Land situate in Warwick Township in the County of Lancaster containing One Hundred & Fifty ^{Three} ~~Five~~ acres & a Half and the usual allowance of six acres P. Cent for Roads &c. Surveyed for George Swengell the 29th day of August 1749 in pursuance of a Warrant dated the 10th day of September 1748.

P. Wm Parsons. —

IN TESTIMONY that the above is a copy of the original remaining on file in the Department of Internal Affairs of Pennsylvania, made conformably to an Act of Assembly approved the 16th day of February, 1833, I have hereunto set my Hand and caused the Seal of said Department to be affixed at Harrisburg, this eighteenth day of October 1906.

Isaac P. Brown
Secretary of Internal Affairs.